



## Orthopaedic Advanced Practice Provider Update

Christine McAndrew, PA-C

‘Advanced Practice Provider’(APP) is a general title used to describe individuals who have completed the advanced education and training that qualifies them to (1) manage medical problems and (2) prescribe and manage treatments within the scope of their training. Some specific types of APPs include clinical nurse specialists, nurse practitioners, and physician assistants. APPs are well positioned and increasingly recognized for their ability to drive value across healthcare.

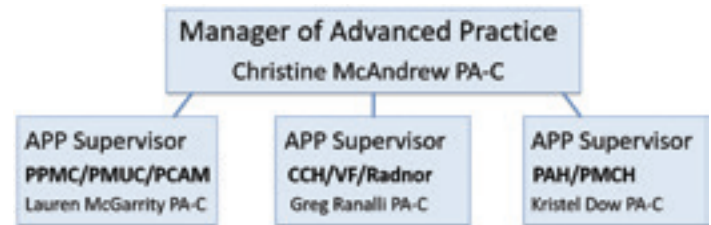
Within the department of Orthopaedic Surgery we have had extensive growth within our APPs over the last ten years or so. Back in 2002 the first three advanced practice providers were hired into the department. Over the next ten years the APPs doubled in size. From 2012 until present day the APP growth has risen to 36 advanced practice providers across all sub divisions and geographic locations. The ratio is just about 1:1; supervising physician:APP.

Our APP’s have had a tremendous impact on patient care within Penn Orthopaedics. They are on the front lines making significant strides to improve clinical care here at Penn Medicine. They have increased access to care, support an increasing clinical demand, and manage continuity and continuum of care. They drive safety, quality, cost and satisfaction to our patients. The majority of our APPs all run independent sessions which range from post-operative patients, return and new patients; as well as minor procedures. They also do the majority of the history and physicals and prepare the patients for surgery. Each year we have seen an increase in total visits by our APPs. In FY18 they saw a total of 3,491 new patients and 17,182 established patients.



In October of 2018 we implemented a new APP Leadership structure. Under the new configuration we have an APP Supervisor at each hospital: PPMC, PAH and CCH. The APP supervisors work under the direction of the APP Manager to provide clinical and operational management for the APPs aligned to their regional assignments, while maintaining

their clinical responsibilities and in support of departmental missions. Our goal is to continue to expand the individual development of our APPs and open lines of communication to reach our common objective of improved patient care.



In January of 2019 the department opened the Orthopaedic Extended Hours of Cherry Hill which is primarily physician assistant run and supported by Dr. Samir Mehta as attending physician. Hours of operation are Tuesday 4-8PM and Saturday 9-1PM. Appointments can be made ahead of time or walks ins are available. This has not only opened access to care but also allows for additional hours beyond the “normal” business hours. It allows us to streamline care to ensure that patients are getting in to the correct surgeon or practitioner and in a timely manner.

In summary, the advanced practitioners of Orthopaedic surgery are highly valued members of the clinical care team. I would like to take this opportunity to personally congratulate the advanced practitioners on their achievements and thank them for their endless dedication and commitment to the department and patients.



Figure 1. Some of the many APPs after a meeting at Pennsylvania Hospital